

Code No: 134BJ

R16

JAWAHARLAL NEHRU TECHNOLOGICAL UNIVERSITY HYDERABAD

B. Tech II Year II Semester Examinations, April - 2018

MACHINE DRAWING
(Mechanical Engineering)

Time: 3 Hours

Max. Marks: 75

Answer any THREE questions from Part-A
Part-B is Compulsory

PART-A

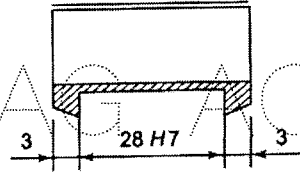
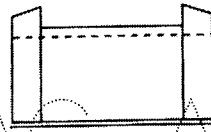
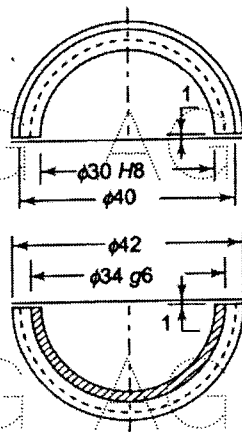
[3 × 10 = 30 Marks]

1. Draw the front, top and left hand side view of a 30mm diameter square headed bolt. [10]
2. Draw the full-sectional front view and top view of a single riveted single plate butt joint for plates of 15mm thickness. [10]
3. Draw the sectional front, top and side view of a socket and spigot joint to join two pipes of diameter 35mm each. [10]
4. Draw the sectional front, top and side view of a knuckle joint to join two pipes of diameter 30mm each. [10]

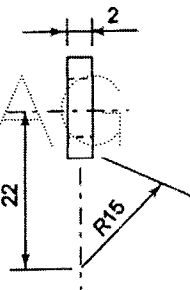
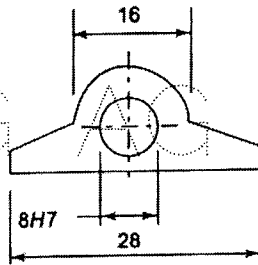
PART-B

1 × 45 = 45 Marks

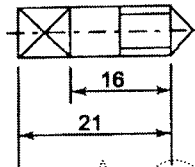
5. Assemble all the parts and draw the following views of the connecting rod.
 - a) Full sectional top view
 - b) Front view. All dimensions are in mm.[45]



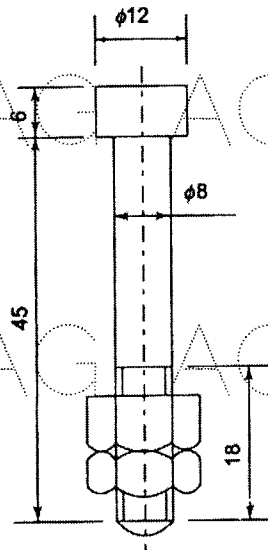
Brasses



Shims
2 off



$\phi 6$, Set screw



$\phi 8.2$ bolts

